

# A-C Electric Company

## Statement of Qualification



8<sup>th</sup> Largest Electrical Contractor in California

*Engineering News Record – 2022*

74<sup>th</sup> Largest Electrical Contractor in U.S.

*Engineering News Record – 2022*

Over 614 Megawatts of Solar Installed

*As of 2022*

## **Table of Contents**

1. Company Profile	3
2. Safety Philosophy	5
3. Expert Solar Solutions	7
4. Design Build Solar Solutions	8
5. Education Solar Projects	9
6. Commercial Solar Projects	17
7. Automotive Dealership Solar Projects	23
8. Agriculture Solar Projects	25
9. House of Worship Solar Projects	28
10. Utility Scale Solar Projects	32
11. Solar Equipment	35
12. Client References	36
13. General Information	38
14. Contact Information	40



661-633-5368  
www.a-celectric.com

## Company Profile

A-C Electric Company has been exceeding the demands of the evolving electrical construction industry since 1945. Our record of success spans nearly every field of electrical construction; including renewable energy, industrial, commercial, medical, educational, municipal, transportation, and military projects. Our extensive experience, stability, and versatility enable us to provide our clients with advanced yet cost-effective solutions to their most complex electrical challenges.

As one of the largest electrical contractors in California, we pride ourselves in employing the best and the brightest individuals designing solutions that last, utilizing the highest quality materials and the latest construction methods to ensure that our customers receive the level of quality and value that they deserve. Our superior project performance, professionalism, and stability are evidenced by our bond rating, which is one of the best in the industry.

Our mission is to partner with you to deliver quality, value, and consistent project execution. Our preconstruction services team determines precise, value-engineered solutions for effective methods of delivery that yield outstanding results, and when the project is complete, we continue to support our customers with professional 24/7 services.

We are problem-solvers, licensed electricians, who are not only capable of innovating a solution to match the evolving energy needs of today's business but will be around tomorrow to maintain the value of your investment. We are committed to innovative technology to produce cost-efficient solar arrays that not only guarantee renewable energy, but also financial security for the long term so you don't have to choose between affordable pricing and lasting quality. The decision to purchase a PV solar power generation system is as much about financial efficiency as it is about energy efficiency.

**Let A-C Electric Company's Energy Team aid you in determining if solar is right for you.**

### A-C Electric Company Statement of Qualifications

Information contained in this document is confidential and/or privileged information which should not be used, copied, forwarded, or disclosed without the permission of A-C Electric Company.

221020, V.5



661-633-5368  
www.a-celectric.com

## Why A-C Electric?

### **Consultative Approach**

We work like a partner with our clients, learning their business so we can provide solutions to maximize the customers' return on investment.

### **Financing**

From zero out of pocket options to other low-cost financing solutions we can help you find the right financing product based on your industry and company needs.

### **Incentives and Rebates**

We are experts in uncovering incentives and rebates for energy projects by staying up to date with any regulatory changes helping our customers maximize their options.

### **Warranty and Long-Term Commitment**

Our commitment to our customers is second to none and we'll be here to support your needs well into the future. We hold our vendors to this same standard ensuring you receive the highest quality products.

### **In-House Engineering**

Our expert engineering team will design a system to fit your facility and your unique operating requirements.

### **Turnkey**

Using your energy usage data, our expert analysis and our proprietary modeling, we design-build the right system to maximize your output.

### **Experienced Builders**

We construct everything from solar carport shade structures to rooftop systems and ground mounted solar installations.

### **Efficient Permitting**

Our industry knowledge and seven decades of experience means a more efficient permitting process.

### **Top Notch Crews**

Our 75-year record of performance ensures that your solar installation is safe and efficient. Our experienced crews of licensed electricians ensure that your project is safe, efficient, and code compliant.

### **Quality Control**

From detailed site audits to professional engineering and commissioning, our project delivery process ensures a complete high-quality system.

### **24/7 Monitoring**

Our dedicated monitoring staff ensures that your system is online and operating efficiently. Our comprehensive Operations and Maintenance program is the best in the business.

#### A-C Electric Company Statement of Qualifications

Information contained in this document is confidential and/or privileged information which should not be used, copied, forwarded, or disclosed without the permission of A-C Electric Company.

221020, V.5



661-633-5368  
www.a-celectric.com

## **Safety Philosophy**

### **-Safety is paramount for our team and clients-**

The employees of A-C Electric Company are our most valuable assets, and no phase of business is of greater importance than their personal safety. We base this conviction on the basic principle that all accidents are preventable, and safety is always the responsibility of every employee. A-C Electric Company makes every effort to provide a safe work environment for all employees by providing a comprehensive safety program, including:

- Job specific safety training
- Extensive safety information
- Developing production procedures with safety as a focus
- Ensuring availability of proper tools and equipment that promote safer work practices
- Working with our Joint Training Programs to provide our employees with the highest level of safe work procedures
- Annual goal of Zero Incident Rate

Daily, the Foreman conducts a Job Hazard Analysis (JHA). The JHA consists of all job steps for the day, the hazards of those job steps, and how to properly mitigate them. This results in the construction process flowing smoothly and safely. This process also assists A-C employees in mitigating the hazards that our customer employees may be exposed to. This includes but is not limited to; compliant hole coverings, construction site control, and dropped object hazard mitigation.

Job hazards are shared with our clients, so they too may inform their employees and keep them safe during on-site construction.

## **Injury and Illness Prevention Program**

The elements of our Injury and Illness Prevention Program are designed to cover the requirements outlined in CCR Title 8, Section 3203, and to ensure a safe and healthy work environment for our employees and are as follows:

- Identification of the Safety Director for implementing and maintaining the program.
- A system to ensure compliance with company safety policies and procedures.
- A system for effectively communicating program elements and safety policies to all.
- Procedures for identifying and evaluating workplace hazards.
- Procedures for investigating job related illnesses and injuries.
- A system for correcting unsafe or unhealthy physical conditions, work practices, or procedures in a timely and prioritized manner.
- Provisions for employee training and instruction.
- Explanation and maintenance guidelines for the Safety and Health Record Keeping System.

### **A-C Electric Company Statement of Qualifications**

Information contained in this document is confidential and/or privileged information which should not be used, copied, forwarded, or disclosed without the permission of A-C Electric Company.

221020, V.5



661-633-5368  
www.a-celectric.com

## Safety Training

At each job site, employees are made aware of the hazards associated with the project by the job Foreman and the Safety Department. In addition, the employees are provided with safe work procedures so they may protect themselves and others from hazards that may cause an injury or property damage.

All employees are expected to attend the weekly Tailgate Safety Meetings. During these meetings, a safety bulletin is reviewed, which covers safety and health topics relevant to their work and how they can improve the safety of their environment. All documentation of these meetings, including attendance records, are maintained with the project records and the Safety Department.

Employee safety training is conducted by various methods and at such times as new equipment or production methods are introduced. Training on unfamiliar or new equipment or processes is provided before employees are permitted to operate the equipment or participate in the work process.

## A-C's Worker's Compensation Experience Modification Ratings

<b>April 1, 2022:</b> 0.79	<b>April 1, 2017:</b> 0.77	<b>April 1, 2012:</b> 1.01
<b>April 1, 2021:</b> 0.62	<b>April 1, 2016:</b> 0.78	<b>April 1, 2011:</b> 0.98
<b>April 1, 2020:</b> 0.56	<b>April 1, 2015:</b> 1.02	<b>April 1, 2010:</b> 0.84
<b>April 1, 2019:</b> 0.67	<b>April 1, 2014:</b> 0.96	
<b>April 1, 2018:</b> 0.67	<b>April 1, 2013:</b> 0.94	

## A-C's OSHA Recordable Incident Rate is Among the Lowest in the Industry

<b>2021:</b> 0.31	<b>2017:</b> 1.16	<b>2013:</b> 1.6
<b>2020:</b> 0.97	<b>2016:</b> 3.5	<b>2012:</b> 4.9
<b>2019:</b> 2.79	<b>2015:</b> 0.5	<b>2011:</b> 5.4
<b>2018:</b> 3.37	<b>2014:</b> 3.8	<b>2010:</b> 4.9

### A-C Electric Company Statement of Qualifications

Information contained in this document is confidential and/or privileged information which should not be used, copied, forwarded, or disclosed without the permission of A-C Electric Company.

221020, V.5



661-633-5368  
www.a-celectric.com

## Expert Solar Solutions



Substation design and construction  
Overhead line construction  
Low Voltage/Communications Underground  
Boring

*Solar installations have been a part of A-C Electric Company's construction services long before renewable energy became front page news. In the early 90's, A-C installed the first grid-connected solar system in the state of California for PG&E. Since that time A-C has designed and installed over 614MW of solar PV throughout California.*

### One-Stop Shopping

Commercial installations  
Agricultural installations  
Utility scale systems  
Municipal/Government facilities  
Ground mounted stationary or sun-tracking arrays  
Rooftop installations  
Solar carports

### Highest Quality/Cost Effective Installation

77 years of electrical construction experience  
Complete system installation  
Tie-in to facility distribution system  
Interconnect to local utility

### Turnkey Capabilities

Complete design-build capabilities  
Project budgeting and value engineering  
Customized, high-performance, cost-effective solutions  
Expertly designed, engineered to last  
Payback analysis to ensure solar makes sense for you  
Federal incentive application coordination  
Online metering and performance monitoring

### Support from a Name You Can Trust

Predictive and preventative maintenance  
Extended Warranties

#### A-C Electric Company Statement of Qualifications

Information contained in this document is confidential and/or privileged information which should not be used, copied, forwarded, or disclosed without the permission of A-C Electric Company.

221020, V.5





661-633-5368  
www.a-celectric.com

## Featured Solar Projects Education



### **Bakersfield Christian High School**

**Size:** 501kW

**Project Description:** Complete design, build, and installation of 501kW carport shade structure, fixed solar array; including module installation, electrical infrastructure, and tie-into 21kV building electrical infrastructure.

**Customer:** Bakersfield Christian High School

**Location:** Bakersfield, CA

#### A-C Electric Company Statement of Qualifications

Information contained in this document is confidential and/or privileged information which should not be used, copied, forwarded, or disclosed without the permission of A-C Electric Company.

221020, V.5





661-633-5368  
www.a-celectric.com



## **Bakersfield College**

**Size:** 1MW

**Project Description:** Installation of 1MW carport shade structure, tracking solar array; including electrical infrastructure, combiner boxes, and tie-into building electrical infrastructure.

**Customer:** SunPower Corporation

**Location:** Bakersfield, CA

### **A-C Electric Company Statement of Qualifications**

Information contained in this document is confidential and/or privileged information which should not be used, copied, forwarded, or disclosed without the permission of A-C Electric Company.

221020, V.5



661-633-5368  
www.a-celectric.com

## **Additional Solar Projects Education**

### **Allen Avenue Elementary School**

Size: 144kW  
Installation Type: Carport Shade Structure  
Location: San Dimas, CA

### **Almondale Elementary School**

Size: 175kW  
Installation Type: Carport Shade Structure  
Location: Bakersfield, CA

### **American Elementary School**

Size: 131kW  
Installation Type: Carport Shade Structure  
Location: Bakersfield, CA

### **Arma J. Shull Elementary School**

Size: 157kW  
Installation Type: Carport Shade Structure  
Location: San Dimas, CA

### **Arvin High School East**

Size: 581kW  
Installation Type: Carport Shade Structure  
Location: Arvin, CA

### **Arvin High School West**

Size: 418kW  
Installation Type: Carport Shade Structure  
Location: Arvin, CA

### **Bakersfield High School**

Size: 976kW  
Installation Type: Carport Shade Structure  
Location: Bakersfield, CA

### **Bear Mountain Elementary School**

Size: 235kW  
Installation Type: Carport Shade Structure  
Location: Arvin, CA

### **Bellevue Elementary School**

Size: 110kW  
Installation Type: Roof Mount  
Location: Porterville, CA

### **Bonita High School Phase 1 & 2**

Size: 722kW  
Installation Type: Carport Shade Structure  
Location: La Verne, CA

### **Canyon Ridge High School/Shadow Ridge High School/Summit Leadership Academy**

Size: 157kW  
Installation Type: Carport Shade Structure  
Location: Hesperia, CA

### **Carmel Elementary School**

Size: 144kW  
Installation Type: Carport Shade Structure  
Location: Hesperia, CA

### **Cedar Middle School**

Size: 248kW  
Installation Type: Carport Shade Structure  
Location: Hesperia, CA

### **Centennial Elementary School**

Size: 142kW  
Installation Type: Carport Shade Structure  
Location: Bakersfield, CA

### **Centennial High School 976kW**

Size: 976kW  
Installation Type: Carport Shade Structure  
Location: Bakersfield, CA

#### **A-C Electric Company Statement of Qualifications**

Information contained in this document is confidential and/or privileged information which should not be used, copied, forwarded, or disclosed without the permission of A-C Electric Company.

221020, V.5



661-633-5368  
www.a-celectric.com

**Citrus High School**

Size: 65kW  
Installation Type: Carport Shade Structure  
Location: Porterville, CA

**Corcoran High School**

Size: 238kW  
Installation Type: Carport Shade Structure  
Location: Corcoran, CA

**Cottonwood Elementary School**

Size: 170kW  
Installation Type: Carport Shade Structure  
Location: Hesperia, CA

**Cypress School of the Arts/Hesperia Junior High School**

Size: 222kW  
Installation Type: Carport Shade Structure  
Location: Hesperia, CA

**Del Rio Elementary School**

Size: 180kW  
Installation Type: Carport Shade Structure  
Location: Bakersfield, CA

**Diamond Bar High School 1.1MW**

Size: 1.1MW  
Installation Type: Carport Shade Structure  
Location: Diamond Bar, CA

**East Bakersfield High School 801kW**

Size: 801kW  
Installation Type: Carport Shade Structure  
Location: Bakersfield, CA

**Ed Jones Educational Center 379kW**

Size: 379kW  
Installation Type: Carport Shade Structure  
Location: San Dimas, CA

**El Camino Real Elementary School**

Size: 196kW  
Installation Type: Carport Shade Structure  
Location: Arvin, CA

**Elk Hills School District 103kW**

Size: 103kW  
Installation Type: Ground Mount  
Location: Elk Hills, CA

**Eucalyptus Elementary School**

Size: 118kW  
Installation Type: Carport Shade Structure  
Location: Hesperia, CA

**Exeter Transportation Yard**

Size: 119kW  
Installation Type: Carport Shade Structure  
Location: Exeter, CA

**Farmersville Elementary School**

Size: 154kW  
Installation Type: Ground Mount  
Location: Farmersville, CA

**Foothill High School**

Size: 976kW  
Installation Type: Carport Shade Structure  
Location: Bakersfield, CA

**Freedom Middle School**

Size: 212kW  
Installation Type: Carport Shade Structure  
Location: Bakersfield, CA

**Frontier High School**

Size: 976kW  
Installation Type: Carport Shade Structure  
Location: Bakersfield, CA

**Garces Memorial High School**

Size: 428kW  
Installation Type: Carport Shade Structure  
Location: Bakersfield, CA

**Gladstone Elementary School**

Size: 157kW  
Installation Type: Carport Shade Structure  
Location: San Dimas, CA

**A-C Electric Company Statement of Qualifications**

Information contained in this document is confidential and/or privileged information which should not be used, copied, forwarded, or disclosed without the permission of A-C Electric Company.

221020, V.5



661-633-5368  
www.a-celectric.com

### **Golden Valley High School**

Size: 976kW  
Installation Type: Carport Shade Structure  
Location: Bakersfield, CA

### **Grace Miller Elementary School**

Size: 144kW  
Installation Type: Carport Shade Structure  
Location: La Verne, CA

### **Grimmway Schools**

Size: 177kW  
Installation Type: Carport Shade Structure  
Location: Bakersfield, CA

### **Harmony Magnet Academy**

Size: 589kW  
Installation Type: Carport Shade Structure  
Location: Strathmore, CA

### **Haven Drive Middle School**

Size: 222kW  
Installation Type: Carport Shade Structure  
Location: Arvin, CA

### **Hesperia Adult Education**

Size: 218kW  
Installation Type: Carport Shade Structure  
Location: Hesperia, CA

### **Hesperia High School**

Size: 692kW  
Installation Type: Carport Shade Structure  
Location: Hesperia, CA

### **Hesperia Unified School District Office 209kW**

Size: 209kW  
Installation Type: Carport Shade Structure  
Location: Hesperia, CA

### **Highland High School 1MW**

Size: 1MW  
Installation Type: Carport Shade Structure  
Location: Bakersfield, CA

### **Hollyvale Elementary School**

Size: 104kW  
Installation Type: Carport Shade Structure  
Location: Victorville, CA

### **HUSD Nutritional Services Warehouse**

Size: 104kW  
Installation Type: Carport Shade Structure  
Location: Hesperia, CA

### **Independence Elementary School**

Size: 185kW  
Installation Type: Carport Shade Structure  
Location: Bakersfield, CA

### **Independence High School**

Size: 976kW  
Installation Type: Carport Shade Structure  
Location: Bakersfield, CA

### **J. Marion Roynon Elementary School**

Size: 183kW  
Installation Type: Carport Shade Structure  
Location: La Verne, CA

### **John Doyle Elementary School**

Size: 181kW  
Installation Type: Roof Mount  
Location: Porterville, CA

### **Joshua Circle Elementary School**

Size: 131kW  
Installation Type: Carport Shade Structure  
Location: Hesperia, CA

### **Juniper Elementary School**

Size: 118kW  
Installation Type: Carport Shade Structure  
Location: Hesperia, CA

### **Kern Valley High School**

Size: 372kW  
Installation Type: Carport Shade Structure  
Location: Lake Isabella, CA

#### **A-C Electric Company Statement of Qualifications**

Information contained in this document is confidential and/or privileged information which should not be used, copied, forwarded, or disclosed without the permission of A-C Electric Company.

221020, V.5





661-633-5368  
www.a-celectric.com

**KHSD District Office**

Size: 705kW  
Installation Type: Carport Shade Structure  
Location: Bakersfield, CA

**KHSD Regional Occupational Center**

Size: 790kW  
Installation Type: Carport Shade Structure  
Location: Bakersfield, CA

**KHSD Support Services**

Size: 976kW  
Installation Type: Carport Shade Structure  
Location: Bakersfield, CA

**Kingsburg High School**

Size: 564kW  
Installation Type: Ground Mount  
Location: Kingsburg, CA

**Kingston Elementary School**

Size: 157kW  
Installation Type: Carport Shade Structure  
Location: Hesperia, CA

**Krystal School of Math, Science, & Technology**

Size: 157kW  
Installation Type: Carport Shade Structure  
Location: Hesperia, CA

**La Verne Heights Elementary School**

Size: 131kW  
Installation Type: Carport Shade Structure  
Location: La Verne, CA

**Liberty High School**

Size: 976kW  
Installation Type: Carport Shade Structure  
Location: Bakersfield, CA

**Lil' Explorers Preschool**

Size: 61kW  
Installation Type: Roof Mount  
Location: Bakersfield, CA

**Lime Street Elementary School**

Size: 131kW  
Installation Type: Carport Shade Structure  
Location: Hesperia, CA

**Lone Hill Middle School**

Size: 365kW  
Installation Type: Carport Shade Structure  
Location: San Dimas, CA

**Los Robles Elementary School**

Size: 198kW  
Installation Type: Ground Mount  
Location: Porterville, CA

**Maple Elementary School**

Size: 131kW  
Installation Type: Carport Shade Structure  
Location: Hesperia, CA

**Mesa Grande Elementary School**

Size: 261kW  
Installation Type: Carport Shade Structure  
Location: Hesperia, CA

**Mesquite Trails Elementary School**

Size: 78kW  
Installation Type: Carport Shade Structure  
Location: Oak Hills, CA

**Mira Monte High School**

Size: 976kW  
Installation Type: Carport Shade Structure  
Location: Bakersfield, CA

**Mission Crest Elementary School**

Size: 191kW  
Installation Type: Carport Shade Structure  
Location: Hesperia, CA

**North High School**

Size: 976kW  
Installation Type: Carport Shade Structure  
Location: Bakersfield, CA

**A-C Electric Company Statement of Qualifications**

Information contained in this document is confidential and/or privileged information which should not be used, copied, forwarded, or disclosed without the permission of A-C Electric Company.

221020, V.5



661-633-5368  
www.a-celectric.com

**Nueva Cont. High School**

Size: 47kW  
Installation Type: Carport Shade Structure  
Location: Lamont, CA

**Oak Hills High School**

Size: 718kW  
Installation Type: Carport Shade Structure  
Location: Oak Hills, CA

**Oak Mesa Elementary School**

Size: 183kW  
Installation Type: Carport Shade Structure  
Location: La Verne, CA

**Patriot Elementary School**

Size: 136kW  
Installation Type: Carport Shade Structure  
Location: Bakersfield, CA

**Porterville High School**

Size: 125kW  
Installation Type: Roof Mount  
Location: Porterville, CA

**Porterville High School**

Size: 711kW  
Installation Type: Carport Shade Structure  
Location: Porterville, CA

**Porterville Unified School District  
Office**

Size: 114kW  
Installation Type: Carport Shade Structure  
Location: Porterville, CA

**Ramona Middle School**

Size: 431kW  
Installation Type: Carport Shade Structure  
Location: La Verne, CA

**Ranchero Middle School**

Size: 209kW  
Installation Type: Carport Shade Structure  
Location: Hesperia, CA

**Ridgeview High School**

Size: 976kW  
Installation Type: Carport Shade Structure  
Location: Bakersfield, CA

**Riverdale High School**

Size: 500kW  
Installation Type: Ground Mount  
Location: Riverdale, CA

**Roche Elementary School**

Size: 101kW  
Installation Type: Roof Mount  
Location: Porterville, CA

**Rosedale Middle School**

Size: 175kW  
Installation Type: Carport Shade Structure  
Location: Bakersfield, CA

**Rosedale North Elementary School**

Size: 159kW  
Installation Type: Carport Shade Structure  
Location: Bakersfield, CA

**Ruggenberg Career Center**

Size: 47kW  
Installation Type: Carport Shade Structure  
Location: Bakersfield, CA

**RUSD SunEdison**

Size:  
Installation Type: Carport Shade Structure  
Location: Bakersfield, CA

**San Dimas High School**

Size: 796kW  
Installation Type: Carport Shade Structure  
Location: San Dimas, CA

**Sierra Vista Elementary**

Size: 165kW  
Installation Type: Carport Shade Structure  
Location: Arvin, CA

**A-C Electric Company Statement of Qualifications**

Information contained in this document is confidential and/or privileged information which should not be used, copied, forwarded, or disclosed without the permission of A-C Electric Company.

221020, V.5





661-633-5368  
www.a-celectric.com

**Shafter High School**

Size: 976kW  
Installation Type: Carport Shade Structure  
Location: Shafter, CA

**South High School**

Size: 976kW  
Installation Type: Carport Shade Structure  
Location: Bakersfield, CA

**Stockdale High School**

Size: 976kW  
Installation Type: Carport Shade Structure  
Location: Bakersfield, CA

**Sultana High School**

Size: 653kW  
Installation Type: Carport Shade Structure  
Location: Hesperia, CA

**Topaz Preparatory Academy**

Size: 131kW  
Installation Type: Carport Shade Structure  
Location: Hesperia, CA

**UC Merced**

Size: 1MW  
Installation Type: Ground Mount Tracking  
Location: Merced, CA

**UC Riverside**

Size: 4MW  
Installation Type: Carport Shade Structure  
Location: Riverside, CA

**Vista High School**

Size: 93kW  
Installation Type: Carport Shade Structure  
Location: Bakersfield, CA

**Vista West Cont. High School**

Size: 147kW  
Installation Type: Carport Shade Structure  
Location: Bakersfield, CA

**Walnut High School**

Size: 1.1MW  
Installation Type: Carport Shade Structure  
Location: Walnut, CA

**Walnut Valley Unified School District:  
District Office**

Size: 653kW  
Installation Type: Carport Shade Structure  
Location: Walnut, CA

**West High School**

Size: 976kW  
Installation Type: Carport Shade Structure  
Location: Bakersfield, CA

**West Putnam Elementary School**

Size: 131kW  
Installation Type: Roof Mount  
Location: Porterville, CA

**A-C Electric Company Statement of Qualifications**

Information contained in this document is confidential and/or privileged information which should not be used, copied, forwarded, or disclosed without the permission of A-C Electric Company.

221020, V.5



661-633-5368  
www.a-celectric.com

## Featured Solar Projects Commercial



### **Newby Rubber Phase 1**

**Size:** 204kW

### **Newby Rubber Phase 2**

**Size:** 146kW

### **Newby Rubber Phase 3**

**Size:** 96kW

**Project Description:** Complete design/build and installation of a combined 446kW roof mount system; including electrical infrastructure, PV modules, combiner boxes, inverters, and tie-into electrical infrastructure.

**Customer:** Gordon L. Newby Inc.

**Location:** Bakersfield, CA

#### A-C Electric Company Statement of Qualifications

Information contained in this document is confidential and/or privileged information which should not be used, copied, forwarded, or disclosed without the permission of A-C Electric Company.

221020, V.5



661-633-5368  
www.a-celectric.com



## Westside Recreation & Parks District Multi-Purpose Building

**Size:** 80kW

**Project Description:** Complete design/build and installation of 80kW roof mount system; including electrical infrastructure, PV modules, combiner boxes, inverters, and tie-into building electrical infrastructure.

**Customer:** Klassen Corporation

**Location:** Taft, CA

### A-C Electric Company Statement of Qualifications

Information contained in this document is confidential and/or privileged information which should not be used, copied, forwarded, or disclosed without the permission of A-C Electric Company.

221020, V.5



661-633-5368  
www.a-celectric.com

## **Additional Solar Projects Commercial**

### **Alfred Louie, Inc.**

Size: 202kW  
Installation Type: Roof Mount  
Location: Bakersfield, CA

### **Ameresco Inc. / Kaiser, Baldwin Hills**

Size: 111kW  
Installation Type: Ground Mount  
Location: Ontario, CA

### **American Legion, Post 26**

Size: 34kW  
Installation Type: Roof Mount  
Location: Bakersfield, CA

### **American Paving Company**

Size: 86kW  
Installation Type: Roof Mount  
Location: Fresno, CA

### **Amtrak Station, City of Bakersfield**

Size: 197kW  
Installation Type: Carport Shade Structure  
Location: Bakersfield, CA

### **Bakersfield County Club**

Size: 743kW  
Installation Type: Ground Mount  
Location: Bakersfield, CA

### **Bakersfield Eye Institute Inc.**

Size: 129kW  
Installation Type: Roof Mount  
Location: Bakersfield, CA

### **Bakersfield Police Activities League**

Size: 35kW  
Installation Type: Roof Mount  
Location: Bakersfield, CA

### **Bakersfield Scottish Rite**

Size: 40kW  
Installation Type: Carport Shade Structure  
Location: Bakersfield, CA

### **Breckenridge Partners**

Size: 175kW  
Installation Type: Roof Mount  
Location: Fresno, CA

### **Business Park Plaza Owners Association**

Size: 205kW  
Installation Type: Carport Shade Structure  
Location: Bakersfield, CA

### **Caruthers Community Services District**

Size: 179kW  
Installation Type: Ground Mount  
Location: Caruthers, CA

### **Centre for Neuro Skills**

Size: 309kW  
Installation Type: Roof Mount  
Location: Bakersfield, CA

### **Centre For Neuro Skills**

Size: 116kW  
Installation Type: Ground Mount  
Location: Bakersfield, CA

### **Centre for Neuro Skills**

Size: 102kW  
Installation Type: Roof Mount & Carport Shade Structure  
Location: Bakersfield, CA

#### **A-C Electric Company Statement of Qualifications**

Information contained in this document is confidential and/or privileged information which should not be used, copied, forwarded, or disclosed without the permission of A-C Electric Company.

221020, V.5





661-633-5368  
www.a-celectric.com

**Century Rubber Co. Inc.**

Size: 46kW  
Installation Type: Roof Mount  
Location: Bakersfield, CA

**City of Shafter DG Solar**

Size: 1.25MW  
Installation Type: Carport Shade Structure  
Location: Bakersfield, CA

**Community Action Partnership of Kern**

Size: 163kW  
Installation Type: Roof Mount  
Location: Bakersfield, CA

**Conergy Projects**

Size: 284kW  
Installation Type: Ground Mount  
Location: Wasco, CA

**Covenant Community Services**

Size: 40kW  
Installation Type: Carport Shade Structure  
Location: Bakersfield, CA

**Delta Vector Control District PV System**

Size: 15kW  
Installation Type: Roof Mount  
Location: Visalia, CA

**Diversified Project Services International**

Size: 135kW  
Installation Type: Carport Shade Structure & Roof Mount  
Location: Bakersfield, CA

**Empire Eye & Laser Center**

Size: 126kW  
Installation Type: Carport Shade Structure  
Location: Bakersfield, CA

**FM Baker**

Size: 1.14MW  
Installation Type: Carport Shade Structure  
Location: Bakersfield, CA

**Golden Empire Transit**

Size: 260kW  
Installation Type: Carport Shade Structure  
Location: Bakersfield, CA

**Kings County Government Center/Library Chevron Energy Solutions**

Size: 126kW  
Installation Type: Carport Shade Structure  
Location: Visalia, CA

**Granite Construction**

Size: 397kW  
Installation Type: Roof Mount, Carport Shade Structure, & Ground Mount  
Location: Bakersfield, CA

**Grundfos Pumps**

Size: 1.1MW  
Installation Type: Ground Mount Tracking  
Location: Fresno, CA

**Hanford Library**

Size: 126kW  
Installation Type: Carport Shade Structure  
Location: Hanford, CA

**Houchin Community Blood Bank**

Size: 383kW  
Installation Type: Roof Mount  
Location: Bakersfield, CA

**IBEW Chapter 428**

Size: 39kW  
Installation Type: Carport Shade Structure & Roof Mount  
Location: Bakersfield, CA

**A-C Electric Company Statement of Qualifications**

Information contained in this document is confidential and/or privileged information which should not be used, copied, forwarded, or disclosed without the permission of A-C Electric Company.

221020, V.5



661-633-5368  
www.a-celectric.com

**JF George Enterprise**

Size: 190kW  
Installation Type: Roof Mount  
Location: Visalia, CA

**Journey Air Conditioning**

Size: 60kW  
Installation Type: Roof Mount  
Location: Bakersfield, CA

**Kern County Museum**

Size: 301kW  
Installation Type: Carport Shade Structure  
Location: Bakersfield, CA

**Kern County Sheriff's Office**

Size: 437kW  
Installation Type: Carport Shade Structure  
Location: Bakersfield, CA

**Kern Federal Credit Union**

Size: 129kW  
Installation Type: Carport Shade Structure  
Location: Bakersfield, CA

**Kern Federal Credit Union Civic Center Building**

Size: 68kW  
Installation Type: Carport Shade Structure & Roof Mount  
Location: Bakersfield, CA

**Kern Health Systems**

Size: 132kW  
Installation Type: Carport Shade Structure  
Location: Bakersfield, CA

**Kings County Gov. Center**

Size: 504kW  
Installation Type: Carport Shade Structure  
Location: Hanford, CA

**Knight's Pumping and Portable Services, Inc.**

Size: 96kW  
Installation Type: Ground Mount  
Location: Bakersfield, CA

**Lloyd's Aviation**

Size: 129kW  
Installation Type: Roof Mount  
Location: Bakersfield, CA

**Los Angeles Air Force Base**

Size: 384kW  
Installation Type: Roof Mount  
Location: El Segundo, CA

**Mesa West Medical**

Size: 24kW  
Installation Type: Roof Mount  
Location: Bakersfield, CA

**Metropolitan Recycling**

Size: 162kW  
Installation Type: Roof Mount  
Location: Bakersfield, CA

**Newby Rubber**

Size: 205kW  
Installation Type: Roof Mount  
Location: Bakersfield, CA

**Oral E. Micham Inc. DC GRD**

Size: 155kW  
Installation Type: Ground Mount  
Location: Visalia, CA

**Peninsula Packing**

Size: 1 MW  
Installation Type: Ground Mount Tracking  
Location: Exeter, CA

**Riverwalk Medi Arts Building**

Size: 46kW  
Installation Type: Roof Mount  
Location: Bakersfield, CA

**A-C Electric Company Statement of Qualifications**

Information contained in this document is confidential and/or privileged information which should not be used, copied, forwarded, or disclosed without the permission of A-C Electric Company.

221020, V.5





661-633-5368  
www.a-celectric.com

**S.C. Anderson Inc. – Kern Health Systems**

Size: 151kW  
Installation Type: Ground Mount  
Location: Bakersfield, CA

**Sierra Telephone Company**

Size: 1.22MW  
Installation Type: Roof Mount  
Location: Fresno, CA

**Skyride Unlimited**

Size: 46kW  
Installation Type: Ground Mount  
Location: Bakersfield, CA

**Stockdale Country Club**

Size: 549kW  
Installation Type:  
Location: Bakersfield, CA

**Sunny Lane Multi-Unit Housing**

Size: 102kW  
Installation Type: Roof Mount  
Location: Bakersfield, CA

**The Great American Melodrama**

Size: 46kW  
Installation Type: Carport Shade Structure  
Location: Oceano, CA

**The Mission at Kern County**

Size: 23kW  
Installation Type: Roof Mount  
Location: Bakersfield, CA

**U.S. Cold Storage**

Size: 527kW  
Installation Type: Ground Mount  
Location: Tulare, CA

**Van G Logistics Fowler**

Size: 225kW  
Installation Type: Roof Mount  
Location: Fowler, CA

**Van G Logistics Sanger Cold Storage**

Size: 1.2MW  
Installation Type: Ground Mount  
Location: Sanger, CA

**Van G Logistics Selma Cold Storage**

Size: 3.4MW  
Installation Type: Ground Mount  
Location: Selma, CA

**VFO, The North Face**

Size: 1MW  
Installation Type: Ground Mount  
Location: Visalia, CA

**West Day Multi-Unit Housing Phase 1&2**

Size: 192kW  
Installation Type: Roof Mount  
Location: Bakersfield, CA

**W.M. Lyles Co. Inc.**

Size: 77kW  
Installation Type: Roof Mount  
Location: Bakersfield, CA

**W.M. Lyles Co. Rocklin**

Size: 38kW  
Installation Type: Roof Mount  
Location: Rocklin, CA

**Xcelerate Fitness**

Size: 175kW  
Installation Type: Carport Structure  
Location: Reedley, CA

**A-C Electric Company Statement of Qualifications**

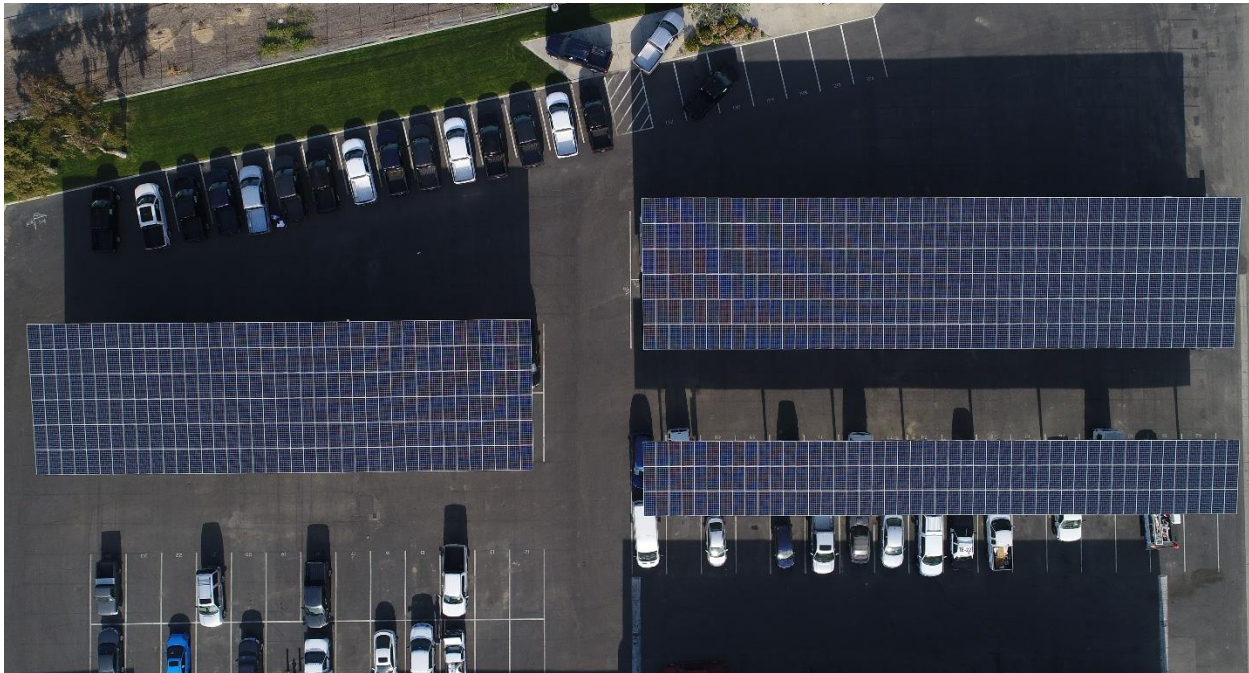
Information contained in this document is confidential and/or privileged information which should not be used, copied, forwarded, or disclosed without the permission of A-C Electric Company.

221020, V.5



661-633-5368  
www.a-celectric.com

## Featured Solar Projects Automotive Dealerships



### **Jim Burke Ford Auto Quick Lube**

**Size:** 51kW

### **Jim Burke Ford Gasoline Alley**

**Size:** 283kW

### **Jim Burke Ford Oak Street**

**Size:** 548kW

**Project Description:** Installation of carport shade structure; including module installation, electrical infrastructure, and tie-into building electrical infrastructure.

**Customer:** Jim Burke Ford

**Location:** Bakersfield, CA

#### A-C Electric Company Statement of Qualifications

Information contained in this document is confidential and/or privileged information which should not be used, copied, forwarded, or disclosed without the permission of A-C Electric Company.

221020, V.5



661-633-5368  
www.a-celectric.com

## **Additional Solar Projects**

### **Automotive Dealerships**

#### **Affinity Properties**

Size: 139kW  
Installation Type: Roof Mount  
Location: Bakersfield, CA

#### **Affinity Truck Center Central**

Size: 222kW  
Installation Type: Roof Mount  
Location: Bakersfield, CA

#### **Central Valley Truck Center**

Size: 222kW  
Installation Type: Roof Mount & Shade Structure  
Location: Fresno, CA

#### **Honda of Fresno**

Size: 241kW  
Installation Type: Roof Mount  
Location: Fresno, CA

#### **Clawson Truck Center**

Size: 94kW  
Installation Type: Roof Mount  
Location: Fresno, CA

#### **Clawson Used Honda Center**

Size: 81kW  
Installation Type: Roof Mount  
Location: Fresno, CA

#### **Clawson Motorsports Service**

Size: 52kW  
Installation Type: Roof Mount  
Location: Fresno

#### **Clawson Motorsports**

Size: 281kW  
Installation Type: Roof Mount  
Location: Fresno, CA

#### **Temecula Valley Lexus**

Size: 163kW  
Installation Type: Generating Facility System  
Location: Temecula Valley, CA

#### **Temecula Valley Toyota**

Size: 310kW  
Installation Type: Generating Facility System  
Location: Temecula Valley, CA

#### **Three Way Chevrolet**

Size: 600kW  
Installation Type: Carport Shade Structure  
Location: Bakersfield, CA

#### **Fontana Chrysler Dodge Jeep**

Size: 360kW  
Installation Type: Carport Shade Structure  
Location: Fontana, CA

#### **Tustin Toyota**

Size: 516kW  
Installation Type: Generating Facility System  
Location: Tustin, CA

#### **A-C Electric Company Statement of Qualifications**

Information contained in this document is confidential and/or privileged information which should not be used, copied, forwarded, or disclosed without the permission of A-C Electric Company.

221020, V.5





661-633-5368  
www.a-celectric.com

## Featured Solar Projects Agriculture



### **Bloemhof Farms**

**Size:** 193kW

**Project Description:** Complete design/build and installation of 193kW ground mount system; including infrastructure, PV modules, combiner boxes, inverters, and tie-into electrical infrastructure.

**Customer:** Ted and Randy Bloemhof

**Location:** Shafter, CA

#### A-C Electric Company Statement of Qualifications

Information contained in this document is confidential and/or privileged information which should not be used, copied, forwarded, or disclosed without the permission of A-C Electric Company.

221020, V.5



661-633-5368  
www.a-celectric.com



## **Giumarra Vineyards**

**Size:** 516kW

**Project Description:** Installation of 516kW ground mount, tracking array; including electrical infrastructure, combiner boxes, and tie-into building electrical infrastructure.

**Customer:** HelioPower, Inc.

**Location:** Bakersfield, CA

### **A-C Electric Company Statement of Qualifications**

Information contained in this document is confidential and/or privileged information which should not be used, copied, forwarded, or disclosed without the permission of A-C Electric Company.

221020, V.5



661-633-5368  
www.a-celectric.com

## **Additional Solar Projects Agriculture**

### **A&W Farms**

Size: 86kW  
Installation Type: Ground Mount  
Location: Bakersfield, CA

### **Barry McCutcheon Farms**

Size: 53kW  
Installation Type: Ground Mount  
Location: Hanford, CA

### **Bloemhof Farms & Harvesting**

Size: 163kW  
Installation Type: Ground Mount  
Location: Bakersfield, CA

### **Bonnie and David Bloemhof Farms**

Size: 198kW  
Installation Type: Ground Mount  
Location: Wasco, CA

### **Dave and David Bloemhof Farms**

Size: 193kW  
Installation Type: Ground Mount  
Location: Shafter, CA

### **Dave & David Bloemhof Farms Phase 2**

Size: 200kW  
Installation Type: Ground Mount  
Location: Shafter, CA

### **D&M Farming**

Size: 24kW  
Installation Type: Ground Mount  
Location: Bakersfield, CA

### **GF Orchard**

Size: 221kW  
Installation Type: Ground Mount  
Location: Bakersfield, CA

### **Kern Ridge Growers**

Size: 691kW  
Installation Type: Roof Mount & Ground Mount  
Location: Bakersfield, CA

### **Mandelin, Inc.**

Size: 345kW  
Installation Type: Roof Mount  
Location: Wasco, CA

### **Monache Meadows Ag Gun Club Road**

Size: 74kW  
Installation Type: Roof Mount & Ground Mount  
Location: Wasco, CA

### **Monache Meadows Ag Kimberlina Road**

Size: 315kW  
Installation Type: Ground Mount  
Location: Wasco, CA

### **PR Farms**

Size: 1.1MW  
Installation Type: Roof Mount  
Location: Clovis, CA

### **Supreme Almonds**

Size: 112kW  
Installation Type: Roof Mount  
Location: Shafter, CA

### **Supreme Almonds Phase 2**

Size: 126kW  
Installation Type: Ground Mount  
Location: Wasco, CA

### **Varsity Produce Sales Inc.**

Size: 457kW  
Installation Type: Roof Mount  
Location: Bakersfield, CA

#### **A-C Electric Company Statement of Qualifications**

Information contained in this document is confidential and/or privileged information which should not be used, copied, forwarded, or disclosed without the permission of A-C Electric Company.

221020, V.5





661-633-5368  
www.a-celectric.com

## Featured Solar Projects Houses of Worship



### Valley Baptist Church

**Size:** 944kW

**Project Description:** Installation of 944kW carport shade structure; including module installation, electrical infrastructure, and tie-into building electrical infrastructure.

**Customer:** Sol Systems, LLC

**Location:** Bakersfield, CA

#### A-C Electric Company Statement of Qualifications

Information contained in this document is confidential and/or privileged information which should not be used, copied, forwarded, or disclosed without the permission of A-C Electric Company.

221020, V.5



661-633-5368  
www.a-celectric.com



## **New Covenant Community Church**

**Size:** 198kW

**Project Description:** Installation of 198kW carport shade structure; including module installation, electrical infrastructure, and tie-into building electrical infrastructure.

**Customer:** New Covenant Community Church

**Location:** Fresno, CA

### **A-C Electric Company Statement of Qualifications**

Information contained in this document is confidential and/or privileged information which should not be used, copied, forwarded, or disclosed without the permission of A-C Electric Company.

221020, V.5



661-633-5368  
www.a-celectric.com

## **Additional Solar Projects Houses of Worship**

### **Columbus Street Baptist Church**

Size: 35kW  
Installation Type: Carport Shade Structure  
Location: Bakersfield, CA

### **Compassion Christian Center**

Size: 45kW  
Installation Type: Roof Mount  
Location: Bakersfield, CA

### **Congregational Church of Shafter**

Size: 22kW  
Installation Type: Roof Mount  
Location: Shafter, CA

### **DayBreak Baptist Church**

Size: 64kW  
Installation Type: Ground Mount  
Location: Bakersfield, CA

### **Disciples Church**

Size: 98kW  
Installation Type: Roof Mount  
Location: Bakersfield, CA

### **First Baptist Church**

Size: 86kW  
Installation Type: Carport Shade Structure  
Location: Clovis, CA

### **First Pentecostal Church**

Size: 159kW  
Installation Type: Carport Shade Structure  
Location: Bakersfield, CA

### **First Presbyterian Church**

Size: 271kW  
Installation Type: Carport Shade Structure  
Location: Bakersfield, CA

### **First United Methodist Church**

Size: 97kW  
Installation Type: Carport Shade Structure  
Location: Bakersfield, CA

### **Greek Orthodox Monastery of Theotokus**

Size: 23kW  
Installation Type: Ground Mount & Roof Mount  
Location: Squaw Valley, CA

### **Greek Orthodox Monastery of Theotokus**

Size: 97kW  
Installation Type: Roof Mount & Ground Mount  
Location: Bakersfield, CA

### **Landmark Christian Center**

Size: 30kW  
Installation Type: Roof Mount  
Location: Porterville, CA

### **Laurelglen Bible Church**

Size: 133kW  
Installation Type: Carport Shade Structure  
Location: Bakersfield, CA

### **Lifepointe Worship Center**

Size: 26kW  
Installation Type: Roof Mount  
Location: Fresno, CA

#### **A-C Electric Company Statement of Qualifications**

Information contained in this document is confidential and/or privileged information which should not be used, copied, forwarded, or disclosed without the permission of A-C Electric Company.

221020, V.5



661-633-5368  
www.a-celectric.com

**Memorial United Methodist Church**

Size: 37kW  
Installation Type: Roof Mount  
Location: Clovis, CA

**Our Lady of Guadalupe 1&2**

Size: 15kW  
Installation Type: Roof Mount  
Location: Bakersfield, CA

**Ridgeview Community Church**

Size: 64kW  
Installation Type: Roof Mount  
Location: Bakersfield, CA

**Saint John's Lutheran Church**

Size: 548kW  
Installation Type: Ground Mount  
Location: Bakersfield, CA

**St. Paul's Episcopal Church**

Size: 48kW  
Installation Type: Carport Shade Structure  
Location: Bakersfield, CA

**The Bridge Bible Church**

Size: 259kW  
Installation Type: Carport Shade Structure  
Location: Bakersfield, CA

**The Oaks Community Church**

Size: 90kW  
Installation Type: Carport Shade Structure  
Location: Bakersfield, CA

**Trinity Anglican Church**

Size: 60kW  
Installation Type: Carport Shade Structure  
Location: Bakersfield, CA

**Valley Bible Church**

Size: 32kW  
Installation Type: Roof Mount  
Location: Shafter, CA

**A-C Electric Company Statement of Qualifications**

Information contained in this document is confidential and/or privileged information which should not be used, copied, forwarded, or disclosed without the permission of A-C Electric Company.

221020, V.5





661-633-5368  
www.a-celectric.com

## Featured Solar Projects Utility Scale



### Swinerton Builders PV Solar Electric System

**Size:** 40MW

**Project Description:** Installation of two 20 MW ground mount, tracking arrays; including electrical infrastructure, PV panels, combiner boxes, inverters and tie-into electrical infrastructure.

**Customer:** Swinerton Builders

**Location:** Rosamond, CA

#### A-C Electric Company Statement of Qualifications

Information contained in this document is confidential and/or privileged information which should not be used, copied, forwarded, or disclosed without the permission of A-C Electric Company.

221020, V.5



661-633-5368  
www.a-celectric.com



## Summer Solar

**Size:** 16MW

**Project Description:** Installation of two 8 MW ground mount arrays; including electrical infrastructure, PV panels, combiner boxes, inverters, and tie-into electrical infrastructure.

**Customer:** Swinerton Builders

**Location:** Antelope Acres, CA

### A-C Electric Company Statement of Qualifications

Information contained in this document is confidential and/or privileged information which should not be used, copied, forwarded, or disclosed without the permission of A-C Electric Company.

221020, V.5





661-633-5368  
www.a-celectric.com

## **Additional Solar Projects Utility Scale**

### **Frontier Newman**

Size: 20MW  
Installation Type: Ground Mount Tracking  
Location: Newman, CA

### **Kerman Solar Project**

Size: 500kW  
Installation Type: Ground Mount Fixed  
Location: Kerman, CA

### **McCarthy - American Kings**

Size: 170MW  
Installation Type: Carport Shade Structure  
Location: Bakersfield, CA

### **McCarthy - Rabbit Brush**

Size: 130MW  
Installation Type: Ground Mount  
Location: Visalia, CA

### **Swinerton Builders Citizen B**

Size: 5MW  
Installation Type: Ground Mount Fixed  
Location: Mendota, CA

### **Swinerton Builders Five Points**

Size: 60MW  
Installation Type: Ground Mount Tracking  
Location: Lemoore, CA

### **Swinerton Builders Giffen**

Size: 28MW  
Installation Type: Ground Mount Tracking  
Location: Cantina Creek, CA

### **Swinerton Builders Kettleman**

Size: 20MW  
Installation Type: Ground Mount Tracking  
Location: Kettleman, CA

### **Swinerton Builders Vega**

Size: 20MW  
Installation Type: Ground Mount Tracking  
Location: Los Banos, CA

### **WZI Southwest Inc.**

Size: 26kW  
Installation Type: Roof Mount  
Location: Bakersfield, CA

#### **A-C Electric Company Statement of Qualifications**

Information contained in this document is confidential and/or privileged information which should not be used, copied, forwarded, or disclosed without the permission of A-C Electric Company.

221020, V.5



661-633-5368  
www.a-celectric.com

## Primary Solar Manufacturers Used in Systems

### Modules



### Inverters







661-633-5368  
www.a-celectric.com

## Client References

### Public

#### **City of Bakersfield**

4101 Truxtun Avenue  
Bakersfield, CA 93301  
(661) 326-3152  
Contact: Pete Jackson

#### **Cal Trans**

1352 W. Olive Avenue  
Fresno, CA 93778-2616  
(559) 243-3815  
Contact: Roberto Salcido

#### **Kern High School District**

5801 Sundale Avenue  
Bakersfield, CA 93309  
(661) 827-3100  
Contact: Mike Hamlin

#### **Kern Community College District**

2100 Chester Avenue  
Bakersfield, CA 93301  
(661) 336-5117  
Contact: Daniel Reed

### Architects/Engineers

#### **Ordiz-Melby Architects, Inc.**

5500 Ming Avenue, Suite 280  
Bakersfield, CA 93309  
(661) 832-5258  
Contact: John Cohrs

#### **Rose Sing & Associates**

131 South Dunsworth Street  
Visalia, CA 93292  
(559) 733-2671  
Contact: Donnie Sing

#### **Mangini Associates Inc**

4320 West Mineral King Avenue  
Visalia, CA 93291  
(559) 627-0530  
Contact: Chris McLain

#### **JMPE**

5500 Ming Ave Ste 251  
Bakersfield, CA 93309  
(661) 831-7851  
Contact: John Maloney

### A-C Electric Company Statement of Qualifications

Information contained in this document is confidential and/or privileged information which should not be used, copied, forwarded, or disclosed without the permission of A-C Electric Company.

221020, V.5



661-633-5368  
www.a-celectric.com

## **Contractors/Private Customer**

### **Colombo Construction**

3211 Rio Mirada Drive  
Bakersfield, CA 93308  
(661) 316-0100  
Contact: Tom Reid

### **Forcum-Mackey Construction**

15695 Jasmine Avenue  
Ivanhoe, CA 93235  
(559) 798-1837  
Contact: Brett McClincy

### **Griffith Company**

1898 South Union Avenue  
Bakersfield, CA 93307  
(661) 831-7331  
Contact: Walt Weishaar

### **SunPower Systems**

1414 South Harbor Way  
Richmond, CA 94804  
(510) 260-8387  
Contact: Steve Adelson

### **Zumwalt Construction, Inc.**

5520 E. Lamona Avenue  
Fresno, CA 93727  
(559) 252-1000  
Contact: Kurt Zumwalt

### **W.M. Lyles**

2810 Unicorn Road  
Bakersfield, CA 93308  
(661) 387-1600  
Contact: Rick Amigh

### **S.C. Anderson, Inc.**

11109 River Run Blvd, Suite 200  
Bakersfield, CA 93311  
(661) 392-7000  
Contact: Rod Olsen

### **TCC**

919 The Alameda  
San Jose, CA 95126  
(408) 350-7500  
Contact: Scott Hawkins

## **A-C Electric Company Statement of Qualifications**

Information contained in this document is confidential and/or privileged information which should not be used, copied, forwarded, or disclosed without the permission of A-C Electric Company.

221020, V.5



661-633-5368  
www.a-celectric.com

## General Information

### **Founded**

1945

### **Date of Incorporation**

June 23, 1947

### **State Contractor's License Number: 99849**

Expires Annually: September 30

C10 Electrical

A General Engineering

B General Building Contractor

Supplemental C61/D42 Sign Installation

Supplemental C12 Earthwork & Paving

### **Bonding**

AGENT

AON Risk Solutions

707 Wilshire Blvd. Suite 2600

Los Angeles, CA 90017

Phone: 213-630-2964

### **Bonding**

SURETY

Berkshire Hathaway Specialty Insurance Co.

One Lincoln Street, 23<sup>rd</sup> Floor

Boston, MA 02111

Best Rating A++ - XV

### **Auditor**

Daniells, Phillips, Vaughan & Bock

300 New Stine Road

Bakersfield, CA 93309

Contact: Patrick Paggi

Phone: 661-834-7411

### **Insurance**

Zurich American Insurance Co.

1299 Zurich Way 8<sup>th</sup> Floor – North Bar

Schaumburg, IL 60196-1056

Fax: 224-539-9642

Phone: 847-605-3631

### A-C Electric Company Statement of Qualifications

Information contained in this document is confidential and/or privileged information which should not be used, copied, forwarded, or disclosed without the permission of A-C Electric Company.

221020, V.5



661-633-5368  
www.a-celectric.com

**Federal Identification Number:** 95-1531419  
**State Identification Number:** 033-0587-7  
**Dun & Bradstreet Number:** 00-960-1717  
**Dept. of Industrial Relations:** 1000000365

**CAGE Code:** 0S212, Expires 7/15/2026

**DUNS Code:** 009601717

**CAO-PAY:** S0303A-HQ0339

**Corporation:** C-0218091

**CSI Code:** 26 Electrical

**NAICS Code:** 238210

**ISN ID#:** 03743477

**Resale Certificate:** 98-027419

**MPIN:** acelectr1

**MSHA:** 9ES

**SIC:** 1731

**TPIN:** 1998H038072

**Workers Compensation Bureau #:** 16-39-86-R

### **City License Numbers**

*Licenses expire and are updated annually*

Bakersfield 09 00035858, expires June 30

Clovis BL12285, expires December 31

Dinuba 03302, expires June 30

Fresno 300, expires June 30

Hanford 96000193, expires March 31

Lancaster 93012576, expires July 31

Palmdale 9187-15873, expires June 30

Tulare 000160, expires December 31

Visalia BL007603, expires June 30

Ontario 93796, expires January 31

*Additional licenses will be added as required for varying jurisdictions.*

### **Counties Served**

B Division – Kern

F Division – Fresno, Madera, Merced, & Mariposa

V Division – Kings and Tulare

O Division – Los Angeles, Orange, Riverside

### **A-C Electric Company Statement of Qualifications**

Information contained in this document is confidential and/or privileged information which should not be used, copied, forwarded, or disclosed without the permission of A-C Electric Company.

221020, V.5





661-633-5368  
www.a-celectric.com

## Contact Information

**Kyle Sanders****Senior Project Manager**

A-C Electric Company  
PO Box 81977  
Bakersfield, CA 93380-1977  
Phone: 661-809-6428  
e-mail: kyle.sanders@a-celectric.com

**Bill Van Skike****Renewable Energy Consultant**

A-C Electric Company  
PO Box 81977  
Bakersfield, CA 93380-1977  
Phone: 661-747-5855  
e-mail: bill.vanskike@a-celectric.com

**Isaac Obel-Jorgensen****VP, Nor Cal Territory Lead & Division Manager**

A-C Electric Company  
PO Box 2425  
Fresno, CA 93745  
Phone: 559-679-7275  
e-mail: isaacobelj@a-celectric.com

**Julie Irvin****Chief Financial Officer**

A-C Electric Company  
PO Box 81977  
Bakersfield, CA 93380-1977  
Phone: 661-410-0000  
e-mail: julie.irvin@a-celectric.com

**Destiny Simmons****Solar Project Assistant**

A-C Electric Company  
PO Box 81977  
Bakersfield, CA 93380-1977  
Phone: 661-381-3403  
e-mail: destiny.simmons@a-celectric.com

**Rusty Stone****VP, So Cal Territory Lead & Division Manager**

A-C Electric Company  
PO Box 81376  
Bakersfield, CA 93380-1376  
Phone: 661-633-5368  
e-mail: rustystone@a-celectric.com

**Jim McGurk****VP, Project Development**

A-C Electric Company  
PO Box 2425  
Fresno, CA 93745  
Phone: 559-233-2208  
e-mail: jimmcgurk@a-celectric.com

**Bob Mahan, CSP****Safety Director**

A-C Electric Company  
PO Box 81977  
Bakersfield, CA 93380-1977  
Phone: 661-410-0000  
e-mail: bob.mahan@a-celectric.com

### A-C Electric Company Statement of Qualifications

Information contained in this document is confidential and/or privileged information which should not be used, copied, forwarded, or disclosed without the permission of A-C Electric Company.

221020, V.5



*A-C Electric Company*

HEADQUARTERS:  
2921 HANGER WAY  
BAKERSFIELD, CA  
93308  
[www.a-celectric.com](http://www.a-celectric.com)

CA LIC 99849